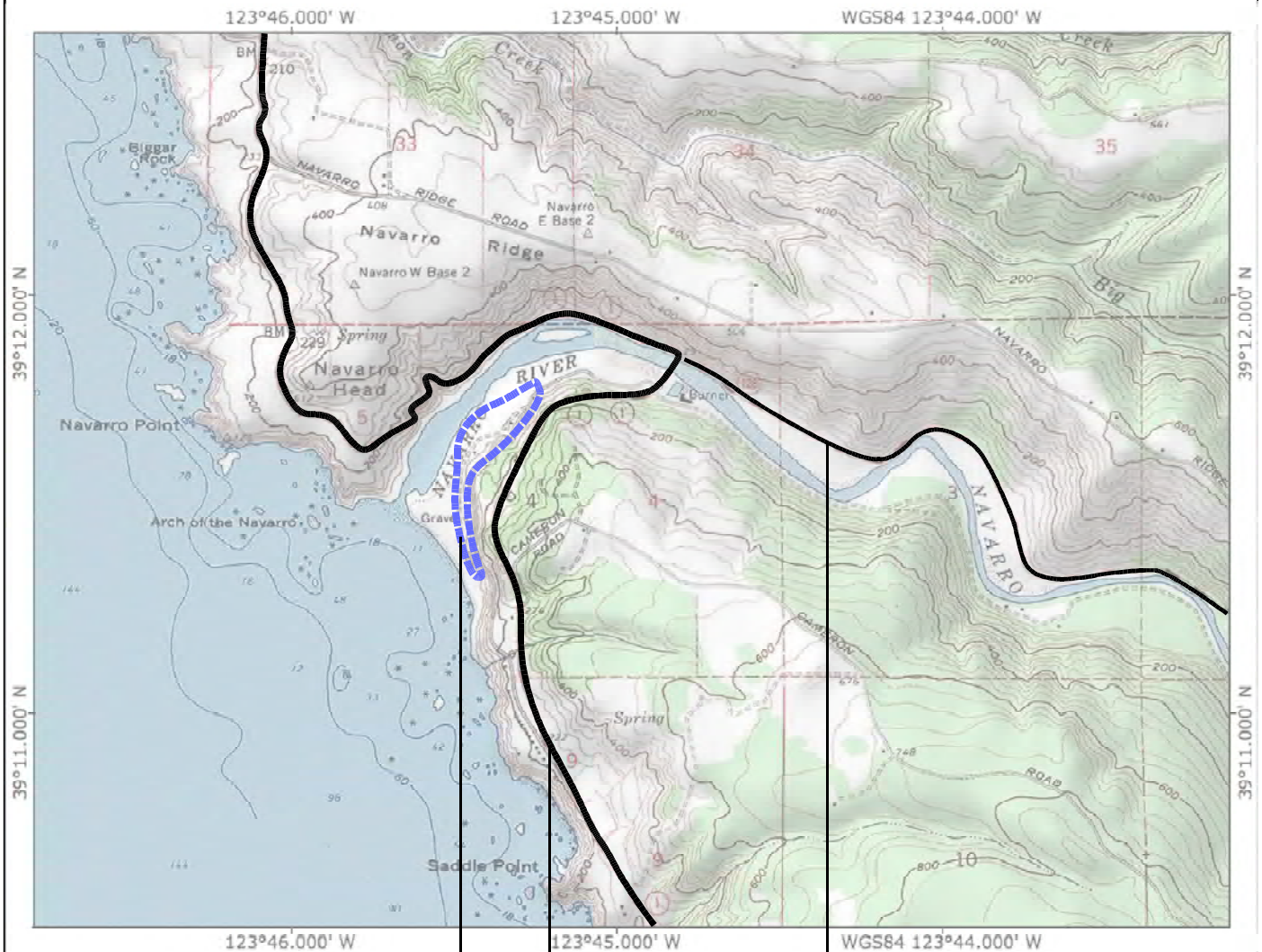


NAVARRO-BY-THE-SEA  
Specific Plan

Navarro-by-the-Sea



Figure 1  
**Regional  
Location**



**Study Area**  
(see Fig 3 for boundary details)

**Highway 1**

**State Highway 128**

NAVARRO-BY-THE-SEA  
Specific Plan

Scale

0' 0.5' 1 mile



**Figure 2**  
**Area Setting**





#### Legend

- Approximate Study Area Boundary
- Approximate State Park Boundary





# Navarro River Redwoods State Park



Navarro-by-the-Sea Center  
for Riparian and Estuarine Research

## NAVARRO-BY-THE-SEA SPECIFIC PLAN

Figure 4  
JURISDICTIONAL  
WETLANDS

### LEGEND

- Approximate Park Boundary
- Arroyo Willow Thicket
- Marshy Grassland
- Marshy Disturbed Land
- Bullrush - Cattail Wetland
- Himalaya Blackberry - English Ivy
- Red Alder / Sword Fern
- Red Alder / Willow / Twinberry
- Coastal Beach

SOURCE: 2M Associates  
Based on original mapping by State of California  
Department of Parks and Recreation. Delineation of  
Potential Jurisdictional Wetlands under Section 404 of  
the Clean Water Act & California Coastal Act. May, 2008

Scale  
0' 20' 100'



DRAFT: 12/16/08

This drawing is conceptual and for planning  
purposes only. Program information, scale,  
location of areas, and other information shown  
are subject to field evaluation and modification.

Topographic base map by I.L. Welty & Associates, 703 A  
North Main Street, Fort Bragg, California dated 12/07.  
Base map does not consist of a boundary survey.

2M Associates  
Landscape Architecture,  
Planning, Horticulture





NAVARRO-BY-THE-SEA  
SPECIFIC PLAN

Figure 5  
EXISTING  
FACILITIES

LEGEND

- Approximate Park Boundary
- Overhead Utility Line and Pole
  - E= Electrical
  - T=Telephone

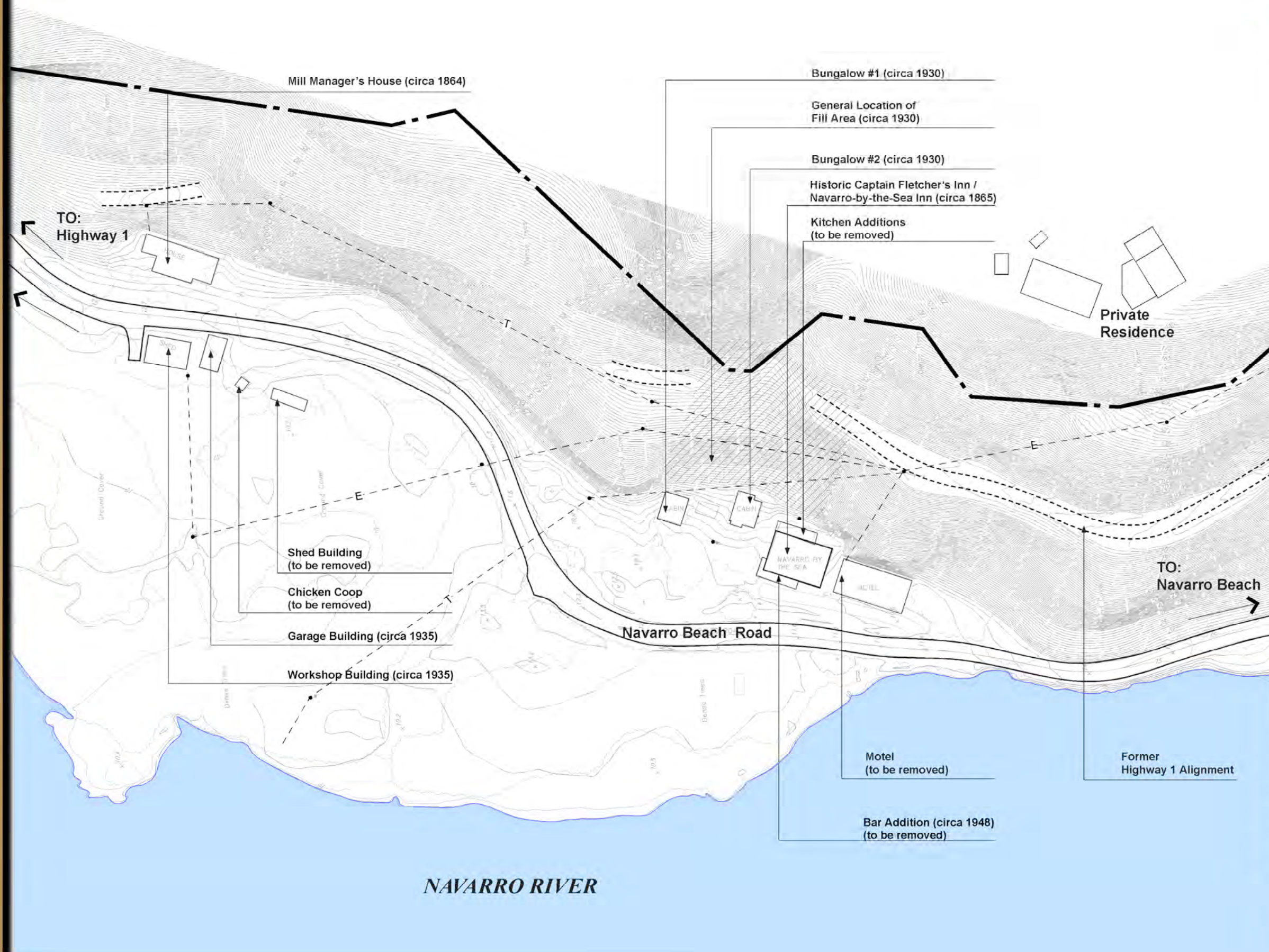
Scale  
0' 20' 100'

DRAFT: 12/16/08

This drawing is conceptual and for planning purposes only. Program information, scale, location of areas, and other information shown are subject to field evaluation and modification.

Topographic base map by L.L. Welty & Associates, 703 A North Main Street, Fort Bragg, California dated 12/07. Base map does not consist of a boundary survey.

2M Associates  
Landscape Architecture,  
Planning, Horticulture







# Navarro River Redwoods State Park

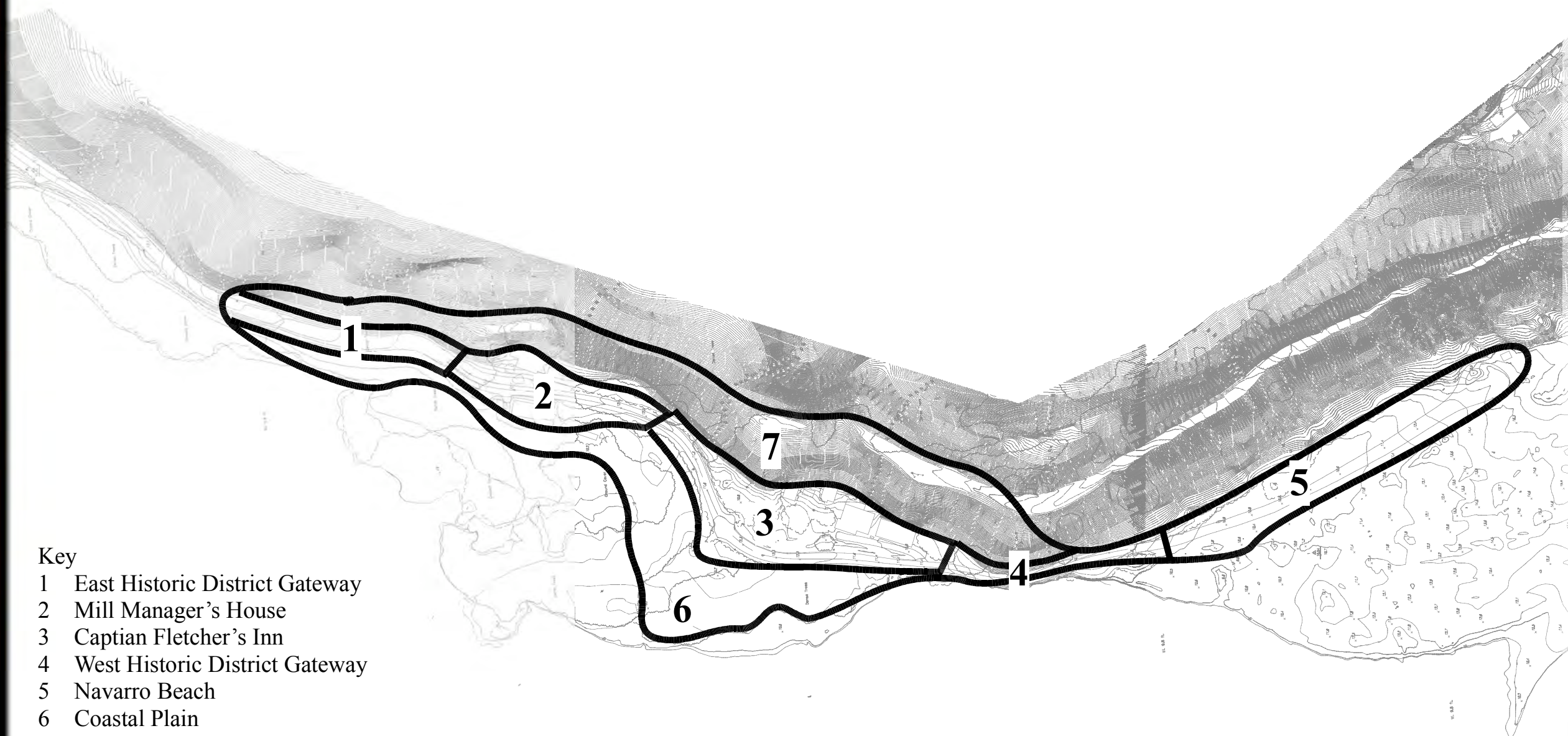
Navarro-by-the-Sea Center  
for Riparian and Estuarine Research

## NAVARRO-BY-THE-SEA SPECIFIC PLAN

FIGURE 6  
SPECIFIC PLAN  
ZONES

### Key

- 1 East Historic District Gateway
- 2 Mill Manager's House
- 3 Captian Fletcher's Inn
- 4 West Historic District Gateway
- 5 Navarro Beach
- 6 Coastal Plain
- 7 Navarro Bluffs



Scale  
0' 20' 100'

North



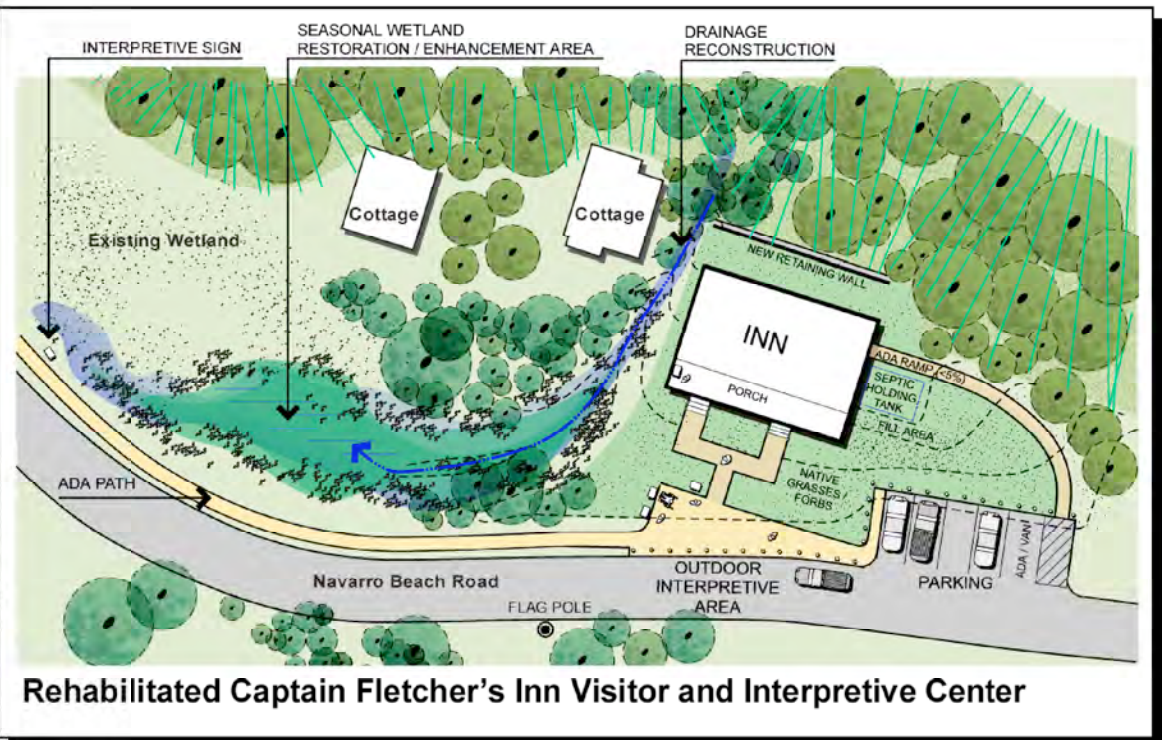
DRAFT: 12/16/08

This drawing is conceptual and for planning purposes only. Program information, scale, location of areas, and other information shown are subject to field evaluation and modification.

Topographic base map by I.L. Welty & Associates, 703 A North Main Street, Fort Bragg, California dated 12/07. Base map does not consist of a boundary survey.

2M Associates  
Landscape Architecture,  
Planning, Horticulture





**2M Associates**  
Landscape Architecture  
Planning, Horticulture